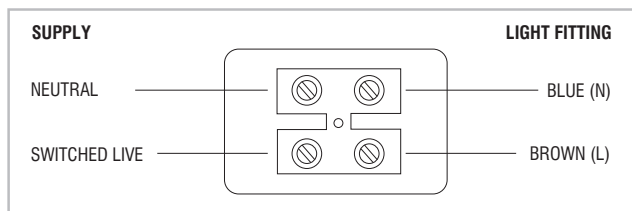


## Wiring

having correctly identified the wiring from your existing light fitting and connect to the terminal block (not supplied) in the following way:



### Check that...

You have correctly identified the wires.  
The connections are tight.  
No loose strands have been left out of the connection block.

## Technical data

Supply Voltage: 220-240 V~, 50 Hz

Bulb Type: 1.5W LED module (SMD) CCT, 3000/4000/6500K  
This product contains a light source of energy efficiency class **G**.

 Non-replaceable light source

 Non-replaceable control gear

 Conformity with all relevant UKCA Directive requirements.


 Conformity with all relevant EC Directive requirements.

 The power supply is Double Insulated and does not require connection to an Earth circuit.

 Waste electrical products should not be disposed of with household waste. Please recycle where facilities exist. Check with your Local Authority or local store for recycling advice.

 This product is not suitable for dimming.

 This product is rated at IP65.

 Caution! Risk of electric shock!

## Care and Safety

We recommend cleaning with a soft dry cloth. Do not use solvents or abrasive cleaners as these could damage the finish.  
For your safety, always switch off the power supply before cleaning.

For further information, please visit <https://www.lighting-info.co.uk/99761>

V4 25/09/2023  
UK Manufacturer: BH17 7BY  
EU Manufacturer: Brilliant AG,  
Brillantstrasse 1, D-27442 Gnarrenburg

saxby  
lighting

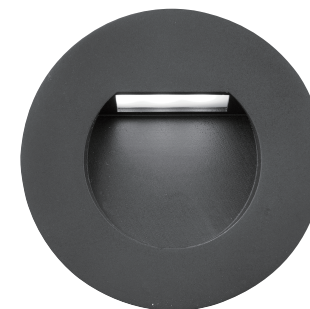
Instruction manual

# Albus CCT

99761, 103852



99761




103852

[www.saxbylighting.com](http://www.saxbylighting.com)

saxby  
lighting

Thank you for purchasing this light fitting. Please read the instructions carefully before use to ensure safe and satisfactory operation of this product. Please retain these instructions for future reference.

## Warning

 This light fitting is double insulated and does not require connection to an Earth circuit.

Please read these instructions carefully before commencing any work.

This unit must be fitted by a competent and qualified electrician.

Install in accordance with the IEE Wiring regulations and current Building Regulations.

Check the pack and make sure you have all the parts listed.

To prevent electrocution switch off at the mains supply before installing or maintaining this fitting. Ensure other persons cannot restore the electrical supply without your knowledge. If you are in any doubt, please consult a qualified electrician.

This light fitting should be connected to a circuit.

If replacing an existing fitting, make a careful note of the connections.

This product is unsuitable for immersion in water.

This product is suitable for location in or near a marine environment.

This system contains non-replaceable parts and cannot be serviced. If damage occurs the part should be scrapped.

Waste electrical products should not be disposed of with household waste. Please recycle where facilities exist. Check with your local authority or retailer for recycling advice.

## Layout

Plan the desired layout of these fittings carefully, ensuring the cables will reach the distances between the junction box and each light fitting.

Avoid locating any cables in positions that would cause a hazard. Position cables and outdoor rated junction boxes (not supplied) away from areas where they may be at risk from being cut, trapped or damaged.

We recommend that you use H05RN-F specification cable (not supplied) which is an outdoor grade, rubber sheathed cable.

The mains supply cable must have a minimum cross section area of 1.0mm<sup>2</sup>.

Cables must be protected using suitable conduit or plastic trunking.

Take care not to drill into any pipes or mains cables beneath the surface during mounting holes preparation.

## Installation

Existing fittings must be completely removed before installation of a new product. Before removing the existing fitting, carefully note the position of each set of wires.

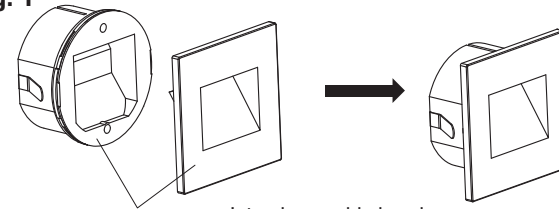
Note that the power needs to be isolated/switched off at the fuse board.

Ensure that the screws and cable entry points are sealed to maintain the IP rating of the product.

- There colour bezels can be replaced, purchase your preferred bezel colour according to the product model. **see Fig. 1.**  
For 99761, the black color bezel is supplied in 99761 product, 99763--- White bezel, 99764---Silver bezel.  
For 103852, the black color bezel is supplied in 103852 product, 103853--- White bezel, 103854---Silver bezel.
- This product is colour changing and can be either warm white (**3000K**) or cool white (**4000K**) or daylight white (**6500K**). Choose your preferred colour before installing by using the CCT switch. **see Fig. 2.**
- **See Fig. 3.** Select a mounting location for the product and cut a mounting hole 75mm diameter in the wall care not to foul any pipes, mains cables or joists beneath the surface. It is always recommended to cut the hole slightly smaller than the size specified, and then file the hole until the recessed unit fits snugly.
- The Minimum wall void depth is 42mm using the housing. The Minimum wall void depth is 33mm without the housing. When more than one wall light is installed, the minimum distance between units is 500mm. The unit must be located a minimum distance of 50mm from a joist.
- Ensure free movement of air by removing void insulation from at least 150mm from around the hole. Under no circumstances must these fittings be covered with insulating matting or similar material.
- Pass the incoming supply cable through the cut out and through the housing supplied. Wire as detailed wiring.
- Ensure that the product is sitting properly in the hole.
- Switch on. Your light is now ready for use.

\* Product images may vary.

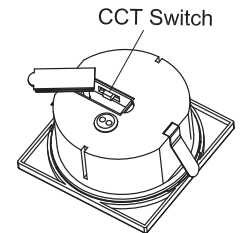
**Fig. 1**



### Interchangeable bezels:

For 99761	For 103852
99761-Black (supplied)	103852-Black (supplied)
99763-White	103853-White
99764-Silver	103854-Silver

**Fig. 2**



**Fig. 3**

