

Thank you for purchasing this light fitting. Please read the instructions carefully before use to ensure safe and satisfactory operation of this product. Please retain these instructions for future reference.

Warning

This light fitting is double insulated and does not require connection to an earth circuit.

Please read these instructions carefully before commencing any work.

This unit must be fitted by a competent and qualified electrician.

Install in accordance with the IEE Wiring regulations and current Building Regulations.

Check the pack and make sure you have all the parts listed.

To prevent electrocution switch off at the mains supply before installing or maintaining this fitting. Ensure other persons cannot restore the electrical supply without your knowledge.

If you are in any doubt, please consult a qualified electrician.

This light fitting should be connected to a fused circuit.

If replacing an existing fitting, make a careful note of the connections.

Waste electrical products should not be disposed of with household waste. Please recycle where facilities exist. Check with your local authority or retailer for recycling advice.

Technical data

Supply Voltage:

220-240 V~, 50 Hz

Bulb Type:

18/14/9W LED (SMD) CCT, 3000/4000/6000K
900/1400/1800Lm - 143.8Lm in EM mode
This product contains a light source of energy efficiency class **D**.

LED

LED

Non-replaceable light source

LED

Replaceable control gear by a professional

UKCA

Conformity with all relevant UKCA Directive requirements.

CE

Conformity with all relevant EC Directive requirements.

The power supply is Double Insulated and does not require connection to an Earth circuit.

Waste electrical products should not be disposed of with household waste. Please recycle where facilities exist. Check with your Local Authority or local store for recycling advice.

This product is not suitable for dimming.

This product is rated at IP65

This product is rated at IK10.

Battery parameters:	
Duration	3 hours (180 Minutes)
Maximum Operating Humdity	90%
Change over time	Approximately 1s
Battery Specification	LifePO4 3.2V 1500mAh
Battery Charge Time	24 Hours
Battery warranty	5 years
Ambient Temperature	0°C - 45°C

Layout

Plan the desired layout of these fittings carefully, ensuring the cables will reach the distances between each light fitting.

Avoid locating any cables in positions that would cause a hazard. Position cables and junction boxes (not supplied) away from areas where they may be at risk from being cut, trapped or damaged.

The mains supply cable must have a minimum cross section area of 1.0mm². Cables must be protected using suitable conduit or plastic trunking.

The products can be wall or ceiling mounted. If wall mounting ensure that the power supply is at the bottom.

Installation

Existing fittings must be completely removed before installation of a new product. Before removing the existing fitting, **carefully note the position of each set of wires**.

Note that the switch is turned off before installation.

The ceiling surface must be flat and smooth to ensure a good fit.

Ensure that the screws and cable entry points are sealed to maintain the IP rating of the product.

- Twist and remove the lamp cover from the product, keep safe for refitting later.
- Turn the clip to loose the LED tray in the rear casing.
- Using the rear casing as a template mark the position to drill out the fixing holes. Take care to avoid damaging any concealed wiring and pipes.
- Fix the rear casing into the position using the installation plugs and screws.

- Pull the cable through the cable entry hole and seal to maintain the IP rating and wire as detailed Wiring Diagram.
- Unscrewed the battery box cover and then connect the battery DC connector together before commissioning.
- Refit the LED tray back into the rear casing and lock the clip.
- Twist the lamp cover back onto the product and lock in place.
- Replace fuse or circuit breaker and switch on. Your light is now ready for use.

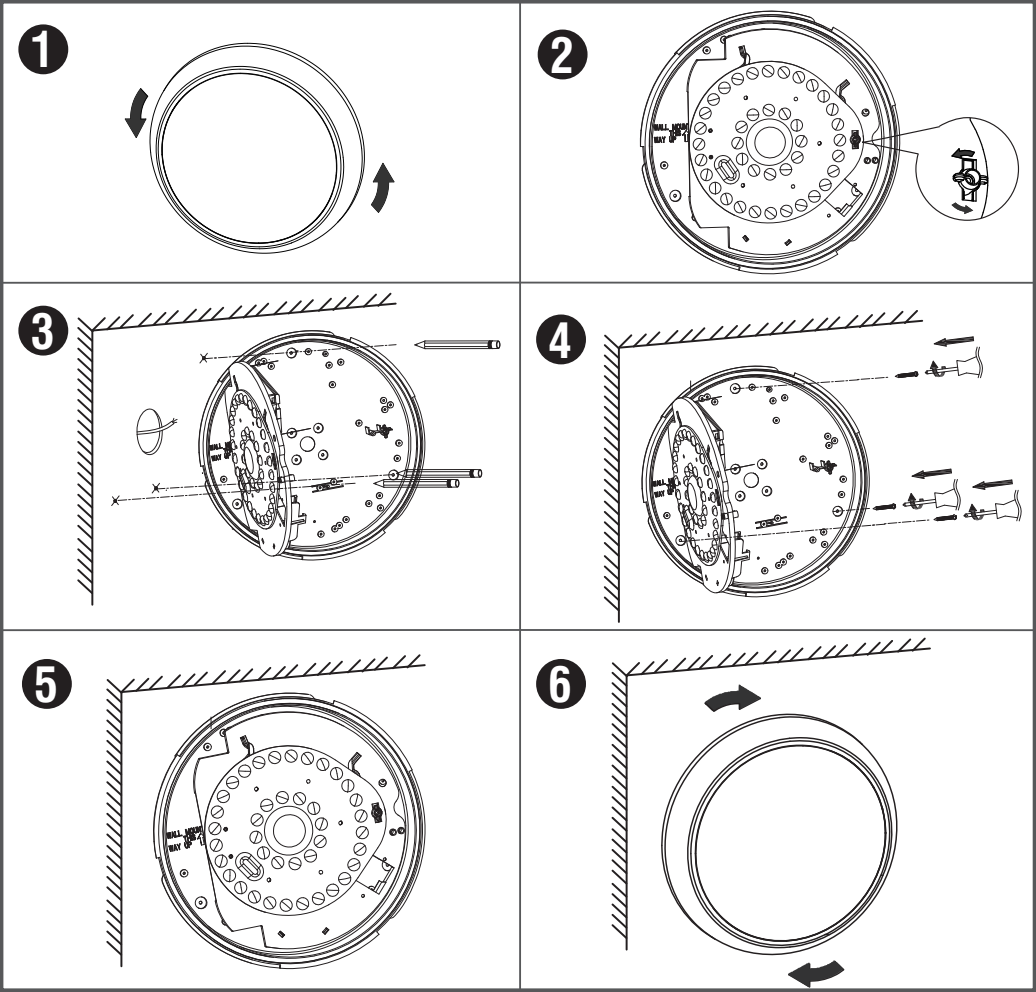


The wattage is changeable between 18/14/9W using the wattage switch on the driver before installation.

The colour is changeable between 3000/4000/6000K using the CCT switch on the driver before installation.

Choose your preferred wattage and colour before installing by wattage switch or CCT switch on the driver.

Note: Befefore you change the wattage or colour, please turn off the power switch for safety.



* Product images may vary.

Bezels

The following individual casings are available for purchase separately.

95545 : Chrome plain
95548 : Black plain
95551 : Anthracite grey plain

95546 : White eyelid
95549 : Black eyelid
95552 : Anthracite grey eyelid

95547 : White grill
95550 : Black grill
95553 : Anthracite grey grill

Wiring

- This product is double insulated and must not be earthed. If there are any incoming earth cables, they must be joined together and well insulated with good quality insulation tape. This is to ensure earth continuity throughout your property.
- Having correctly identified the wiring from your existing light fitting, connect to the quick fit connection block in the following way, using the supplied link cables where necessary.

