

Pairing Instruction

1. Turn on Bluetooth on the phone
2. Open Tuya APP, click "Add device" (at the top/right corner)
3. Then, choose lighting → light source (BLE + Wifi)
4. Turn the light on, leave it on for 10 seconds. Then, turn it off/on five times (one second gap between clicks). When the light starts to blink, click 'Confirm the indicator is blinking or breathing' on the APP and follow the APP instructions.
5. For the best result, please pair one light each time before the installation.

Technical data

Supply Voltage: 220-240 V~, 50 Hz

Bulb Type: 8W LED module (SMD) RGBW, white color is 4000K This product contains a light source of energy efficiency class **F**.

 Non-replaceable light source |  Non-replaceable control gear

 Conformity with all relevant UKCA Directive requirements.

 Conformity with all relevant EC Directive requirements.

 The power supply is Double Insulated and does not require connection to an Earth circuit.

 Waste electrical products should not be disposed of with household waste. Please recycle where facilities exist. Check with your Local Authority or local store for recycling advice.

 This product is suitable for dimming with 'TUYA' app, Amazon Echo or Google Home.

 This product is fire rated to 30, 60, 90 minutes.

 This product is rated at IP65.

Optional Colour Bezels

There are four optional colour bezels – 90377 (Satin Nickel), 90378 (Chrome), 92513 (Matt black) and 78418 (Antique brass). Rotate the fixed bezel one quarter turn anticlockwise and pull it away from the luminaire. Select a new bezel and rotate it one quarter turn clockwise back onto the front of the luminaire.

Do not remove the rubber seal from the rear of the luminaire outer rim. Ensure that it is secure and correctly positioned to maintain the IP65 rating.

Care and Safety

We recommend cleaning with a soft dry cloth. Do not use solvents or abrasive cleaners as these could damage the finish. For your safety, always switch off the power supply before cleaning.

For further information, please visit <https://www.lighting-info.co.uk/81555>

V5 10/05/2023

UK Manufacturer: BH17 7BY

EU Manufacturer: Brilliant AG,
Brilliantstrasse 1, D-27442 Gnarrenburg

saxby
lighting

Instruction manual

Smart ShieldPRO

81555




www.saxbylighting.com

saxby
lighting

Thank you for purchasing this light fitting. Please read the instructions carefully before use to ensure safe and satisfactory operation of this product. Please retain these instructions for future reference.

Warning

 This light fitting is double insulated and does not require connection to an earth circuit.

Please read these instructions carefully before commencing any work

This unit must be fitted by a competent and qualified electrician.

Install in accordance with the IEE Wiring regulations and current Building Regulations.

Check the pack and make sure you have all the parts listed.

This system operates at Safety Extra Low Voltage, via the supplied LED driver, Never connect the light fittings directly to the mains without using the supplied LED driver.

To prevent electrocution switch off at the mains supply before installing or maintaining this fitting. Ensure other persons cannot restore the electrical supply without your knowledge. If you are in any doubt, please consult a qualified electrician.

This light fitting should be connected to a fused circuit.

If replacing an existing fitting, make a careful note of the connections.

This product complies with Building Regulations Part B and is suitable for use in 30, 60 & 90 minutes fire rated ceiling.

This product is suitable for covering with insulation 270mm.

This system contains non-replaceable parts and cannot be serviced. If damage occurs the part should be scrapped.

Waste electrical products should not be disposed of with household waste. Please recycle where facilities exist. Check with your local authority or retailer for recycling advice.

Layout

Plan the desired layout of these fittings carefully, ensuring the cables will reach the distances between the transformer and each light fitting.

Avoid locating any cables in positions that would cause a hazard. Position cables and junction boxes (not supplied) away from areas where they may be at risk from being cut, trapped or damaged.

The mains supply cable must have a minimum cross section area of 1.0mm².

Cables must be protected using suitable conduit or plastic trunking.

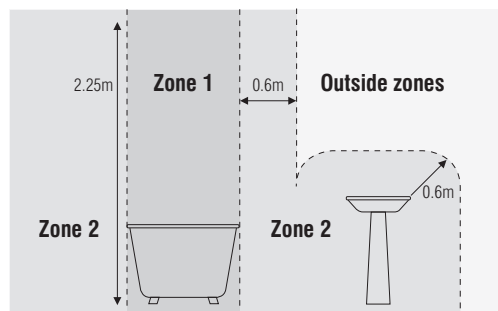
The unit must be located a minimum distance of 50mm from a joist.

The distance between units must be 0.5m minimum.

This product must be mounted out of arms reach.

This product is suitable for use zone 2 and outside zones in a bathroom. Please see diagram.

If this unit is being fitted in a room zone 1 containing a bath or shower, a 30mA RCD must be used - in accordance with IEE regulations.



Installation

Existing fittings must be completely removed before installation of a new product. Before removing the existing fitting, carefully note the position of each set of wires.

The ceiling surface must be flat and smooth to ensure a good fit.

Note that the switch is turned off before installation.

Ensure that the screws and cable entry points are sealed to maintain the IP rating of the product.

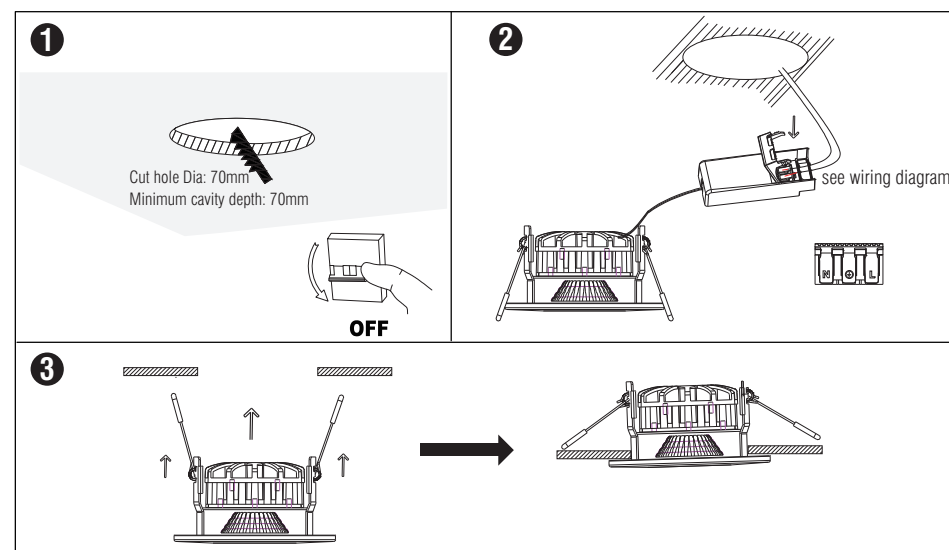
This product is suitable for dimming with 'Tuya' app, Amazon Echo or Google Home.

We recommend putting the wifi receiver within 20-25 meters of your WI-FI Hub. This will vary depending on the strength of your WI-FI coverage.

Saxby Smart products are only supported on 2.4G WIFI bands.

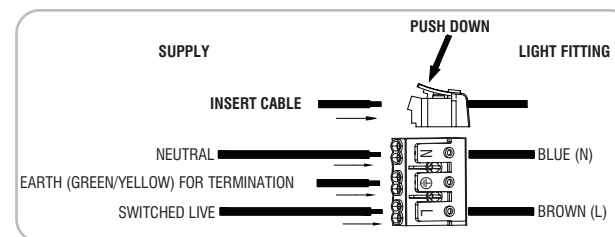
We recommend testing the position before full installation.

- Cut a mounting hole 70mm diameter in the ceiling taking care not to foul any pipes, mains cables or joists beneath the surface. It is always recommended to cut the hole slightly smaller than the size specified, and then file the hole until the recessed unit fits snugly. Ensure a minimum ceiling void depth of 70mm is available.
- Pull the mains supply cable through the hole and wire as details wiring.
- Push the spring clips upwards and fit into the ceiling hole, then push the unit up until firmly in position, ensuring that no cables are trapped.
- Ensure that the product is sitting properly in the hole. Switch on. Your light is now ready for use.



Wiring

Unclip the cover from the quick fit connection block at the end of the driver. Having correctly identified the wiring from your existing light fitting, pull the mains wire through the hole and connect to the connection block inside the quick fit connection case in the following way.



Check that...

You have correctly identified the wires.
The connections are tight.
No loose strands have been left out of the connection block.