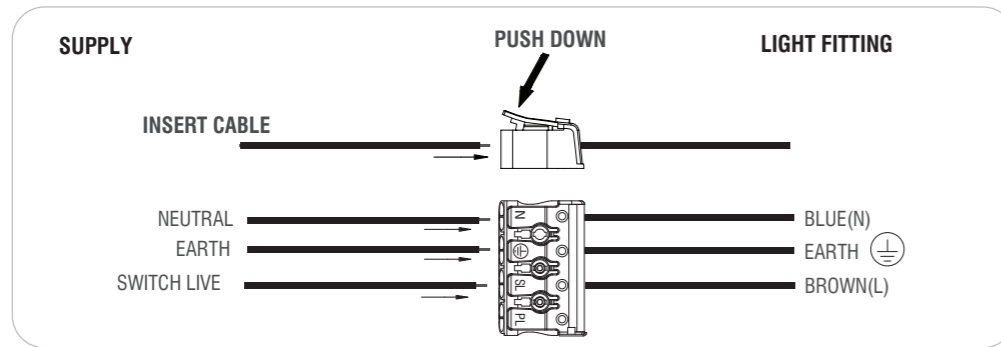


Wiring

Having correctly identified the wiring from your existing light fitting, pull the mains wire through the hole and connect to the quick fit connection block in the following way. No tools are necessary.



Check that...

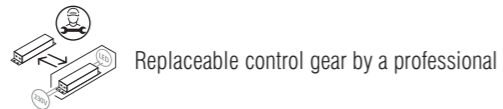
- You have correctly identified the wires.
- The connections are tight.
- No loose strands have been left out of the connection block.

Technical data

Supply Voltage: 220-240 V~, 50 Hz

Bulb Type: 15/12/8W LED (SMD) CCT, 2700/3000/4000/5000/6000K

This product contains a light source of energy efficiency class **D**.



UK CA Conformity with all relevant UKCA Directive requirements.

CE Conformity with all relevant EC Directive requirements.

Class I product, must be connected to earth

Waste electrical products should not be disposed of with household waste. Please recycle where facilities exist. Check with your Local Authority or local store for recycling advice.

This product is not suitable for dimming.

Caution! Risk of electric shock!

Care and Safety

We recommend cleaning with a soft dry cloth. Do not use solvents or abrasive cleaners as these could damage the finish. For your safety, always switch off the power supply before cleaning.

For further information, please visit <https://www.lighting-info.co.uk/121020>

V1 10/08/2025
UK Manufacturer: BH17 7BY
EU Manufacturer: Brilliant AG,
Brilliantstrasse 1, D-27442 Gnarrenburg

saxby
lighting

Instruction manual

Bulkhead Conversion Plate Tri Wattage & CCT

121020



www.saxbylighting.com

saxby
lighting

Thank you for purchasing this product. Please read the instructions carefully before use to ensure safe and satisfactory operation of this product. Please retain these instructions for future reference.

Warning

 This light fitting is Class 1 and must be earthed.

Please read these instructions carefully before commencing any work.

This unit must be fitted by a competent and qualified electrician.

Install in accordance with the IEE Wiring regulations and current Building Regulations.

Check the pack and make sure you have all the parts listed.

To prevent electrocution switch off at the mains supply before installing or maintaining this fitting. Ensure other persons cannot restore the electrical supply without your knowledge. If you are in any doubt, please consult a qualified electrician.

This light fitting should be connected to a fused circuit.

If replacing an existing fitting, make a careful note of the connections.

Waste electrical products should not be disposed of with household waste. Please recycle where facilities exist. Check with your local authority or retailer for recycling advice.

Layout

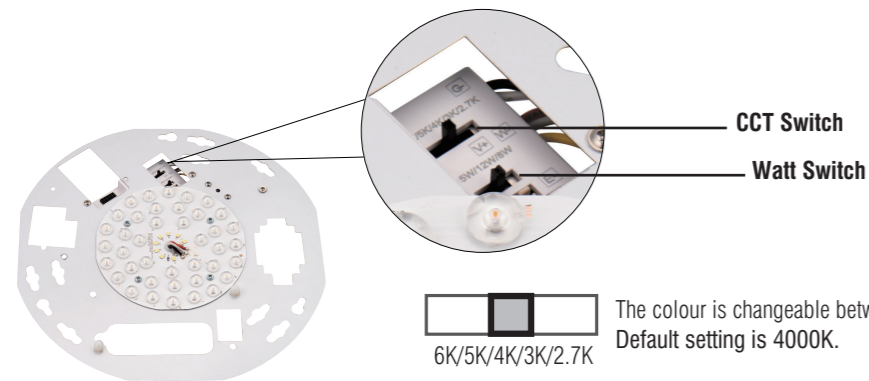
Plan the desired layout of these fittings carefully, ensuring the cables will reach the distances between each light fitting.


Avoid locating any cables in positions that would cause a hazard. Position cables and junction boxes (not supplied) away from areas where they may be at risk from being cut, trapped or damaged.


The mains supply cable must have a minimum cross section area of 1.0mm².

Cables must be protected using suitable conduit or trunking.

CCT & Multi Watt Function



 The colour is changeable between 2700/3000/4000/5000/6000K using the CCT switch. Default setting is 4000K.
6K/5K/4K/3K/2.7K

 The wattage is changeable between 8/12/15W using the wattage switch. Default setting is 15W.
15W 12W 8W

Choose your preferred wattage and colour before installing by wattage switch or CCT switch on the driver.

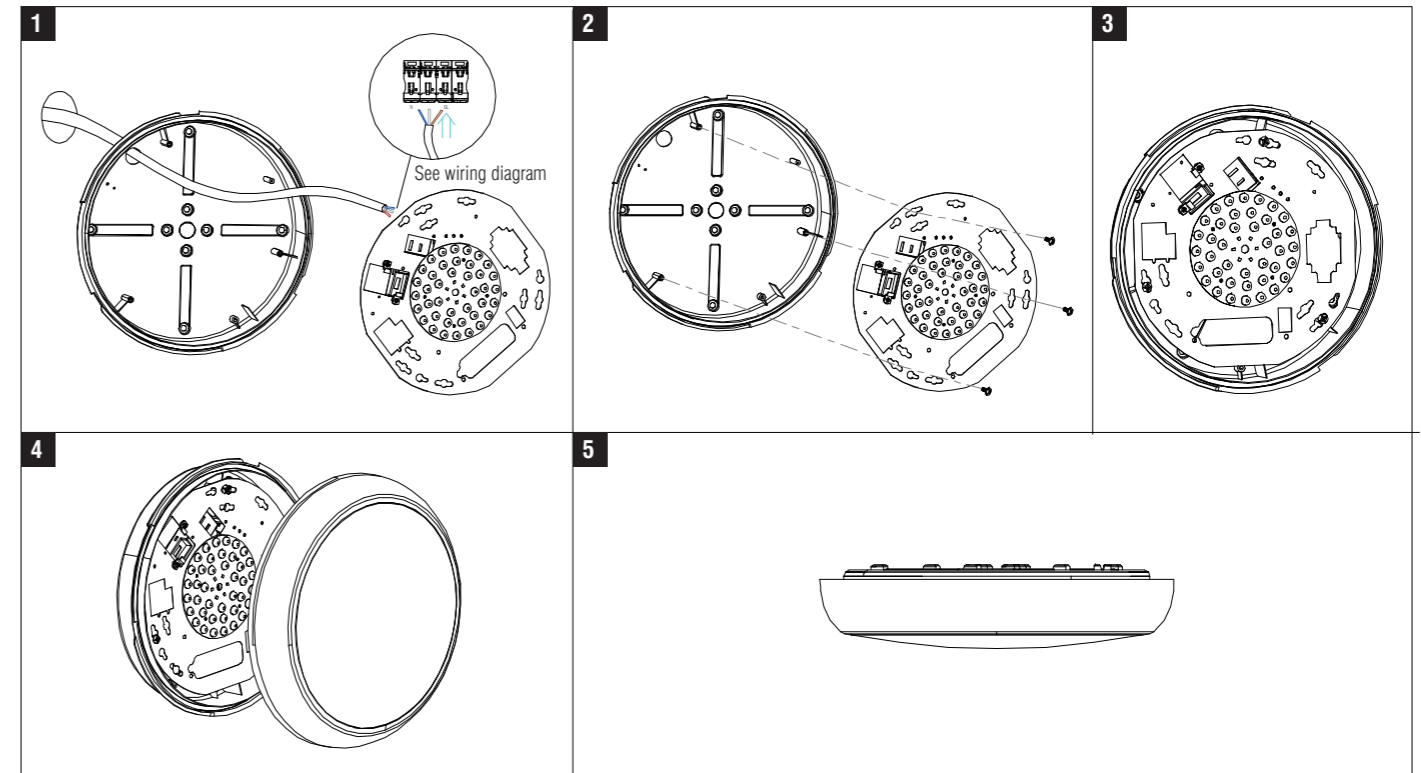
Note: Before you change the wattage or colour, please turn off the power switch for safety.

Installation

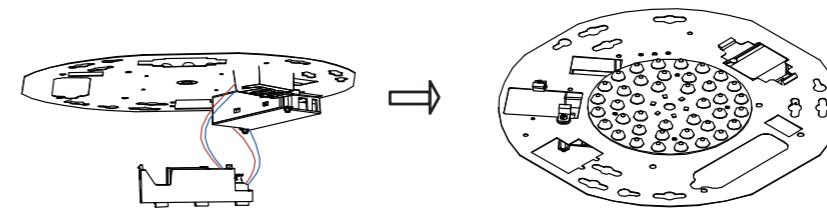
Existing fittings must be completely removed before installation of a new product. Before removing the existing fitting, carefully note the position of each set of wires.

Note the switch is turned off before installation.

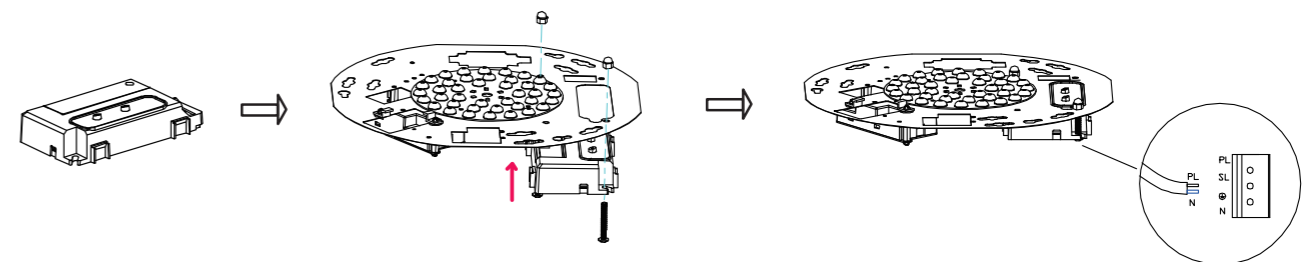
This product is used with bulkhead (purchase separately) together. Please refer to the installation diagram to install.



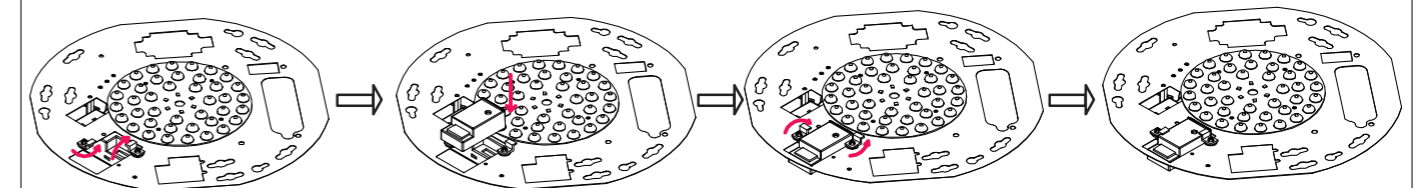
Installation with the microwave sensors & emergency kit



Install the MW motion sensor 101456, more details about the MW motion sensor, please refer to the instruction manual of 101456.



Install the ULTRA EM 2-in-1 Kit 113964, more details about the ULTRA EM 2-in-1 Kit, please refer to the instruction manual of 113964.



Install the Bulkhead 2-in-1 MW Sensor 114573, more details about the Bulkhead 2-in-1 MW Sensor, please refer to the instruction manual of 114573.